

# Sage Estimating



## Industry Cost Databases

### Trade-specific cost databases help you put your best bid forward faster.

Sage Estimating (SQL) offers and supports a variety of industry-specific databases, populated with hundreds or in some cases thousands of standard cost items. Whether you're a commercial, residential, or a specialty contractor, you'll find a database that will meet your particular needs. Update the database with your own pricing and productivity factors, add unique items and assemblies specific to your business, and you'll accelerate your estimating processes by leaps and bounds.

### Make the database your own.

The advantage of Sage Estimating is that it's adaptable to fit your business—whereas competing estimating solutions may require you to try to fit your business into the methods and practices of the software. When you choose Sage Estimating and one of the industry databases, you have the flexibility to make them both your own. Each industry database is easily customized to meet your specific requirements and estimating methods.

- Standard industry items and Smart Assemblies are included in each database.
- Add your own pricing from historical costs or import current pricing from a variety of methods.
- Fine-tune by incorporating your company's estimating methodology with your own unique items, formulas, assemblies, productivity, and conversion factors.

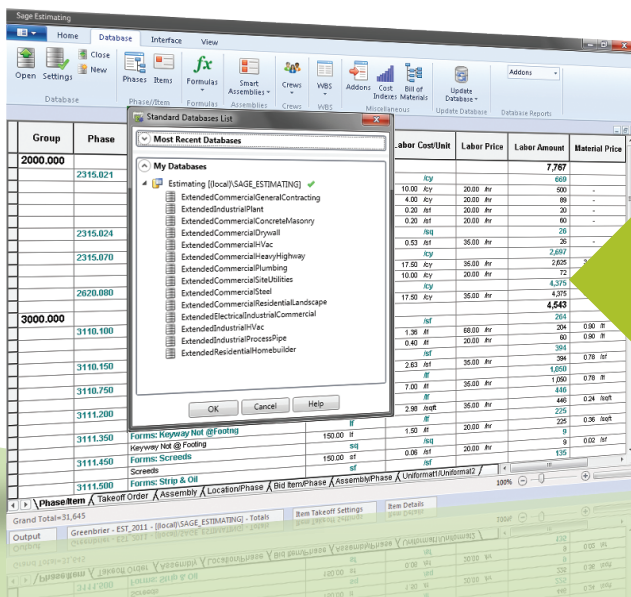
For more information on how Sage Estimating along with an industry database can help you put your best bid forward faster, visit: [www.SageEstimating.com](http://www.SageEstimating.com) or call **800-628-6583**.

#### BENEFITS

Improve ROI by jump-starting your database building efforts.

Save time by using prebuilt items, assemblies, and formulas structured using CSI MasterFormat.

Easily customize pricing, labor, and productivity factors to fit your specific needs.



Start with a standard list of industry-specific items and assemblies and then fine-tune by incorporating your own unique items, formulas, assemblies, productivity, and conversion factors.

## Industry Databases and Specifications

### Commercial/Industrial vs. Commercial General Contracting

7,162 items and 246 Smart Assemblies for:

- General Conditions
- Excavation and Sitework
- Demolition
- Concrete
- Masonry
- Structural and Misc. Steel
- Structural and Misc. Steel Design
- Carpentry and Millwork
- Thermal and Moisture Protection
- Doors, Windows, and Curtain Walls
- Finishes: Carpet, Tile, Paint, and more
- Stucco, Drywall, Acoustical, and so on
- Drywall—Duct Enclosure and Beam Wrap
- Specialties
- Equipment
- Furnishings
- Special Construction
- Conveying Systems

### Commercial Concrete/Masonry

1,587 items and 85 Smart Assemblies for:

- General Conditions
- Concrete Foundations
- Concrete Walls
- Concrete Columns
- Concrete Beams
- Concrete Slabs on Grade
- Concrete Suspended Slabs
- Concrete Topping
- Concrete Miscellaneous
- Masonry Brick
- Masonry Concrete Block
- Masonry Glazed Block
- Masonry Stone Work

### Commercial Drywall

1,661 items and 38 Smart Assemblies for:

- General—Conditions
- Stucco—Walls and Framing
- Drywall—Walls and Framing
- Drywall—Shaftwall & Furring
- Drywall—Drywall Columns & Framing
- Drywall—Furdowns and Framing
- Acoustical and Metal Ceilings
- Drywall—Ceilings and Framing
- Drywall—Duct Enclosure & Beam Wrap

### Commercial/Industrial Electrical

15,114 items and 510 Smart Assemblies for:

- General Conditions
- Sitework
- Miscellaneous Work
- Service Entrance
- Conduit and Copper CU Wire
- Conduit and Aluminum Wire
- Conduit Only
- Underfloor and Wall Duct
- Wireways

- Cable Tray
- Wiremold
- Boxes
- Enclosures
- Light Fixtures
- Security Systems
- Wire and Cable

### Commercial Heavy/Highway

1,733 items and 65 Smart Assemblies for:

- General Conditions
- Piping—Water
- Piping—Sanitary
- Piping—Storm
- Clearing and Grubbing
- Site Grading Given # Primary Equipment Pcs.
- Bases—Where Tons are Given
- Bases—Where Area is Given
- Bituminous Paving—Surfaces
- Misc. Sitework Items and Demolition
- Concrete

### Commercial HVAC

12,464 items and 161 Smart Assemblies for:

- General Conditions
- Pipe Systems Detail
- Pipe Systems Budget
- Pipe Specialties
- Heat Generation
- Refrigeration
- Heat Transfer
- Air Handling
- Air Distribution

### Commercial Plumbing

18,705 items and 176 Smart Assemblies for:

- General Conditions
- Pipe Demolition
- Pipe Systems Detail
- Pipe Systems Budget
- Pipe Specialties
- Plumbing Fixtures
- Multiple Fixture Assemblies
- Plumbing Accessories
- Plumbing Accessories Budget

### Commercial/Residential Landscaping

1,159 items and 26 Smart Assemblies for:

- Landscaping
- Irrigation
- Drainage
- Paving

### Commercial Site Utilities

12,320 items and 89 Smart Assemblies for:

- General Conditions
- Move Earth and Rock
- Pavements and Surfaces
- Drainage
- Sewer
- Water
- Site Electrical

### Commercial Steel

8,936 items and 52 Smart Assemblies for:

- Beams—Channel
- Beams—S Shape
- Beams—W Shape
- Beams—Additional Connections
- Columns—W Shape
- Columns—Additional Connection

### Industrial HVAC

14,971 items and 200 Smart Assemblies for:

- General Conditions
- Pipe—Copper
- Pipe—Carbon Steel
- Pipe—Specialties
- Heat Generation
- Refrigeration
- Heat Transfer
- Air Handling
- Air Distribution

### Industrial Process and Plant

19,953 items and 338 Smart Assemblies for:

- General Conditions
- Demolition and Sitework
- Pavements and Surfaces
- Site Piping
- Site Improvements
- Concrete
- Masonry
- Metals
- Carpentry
- Thermal and Moisture
- Doors and Windows
- Finishes
- Equipment—Pumps and Compressors
- Pipe and Mechanical
- Copper Tube
- Pipe Plastic

### Industrial Process Piping

18,723 items and 136 Smart Assemblies for:

- General Conditions
- Demolition & Sitework
- Pipe—Cast Iron (Duriron)
- Pipe—Copper
- Pipe—Plastic
- Pipe—Stainless Steel
- Pipe—Carbon Steel
- Pipe—Specialties
- Sample Application

### Residential Home Builder

4,116 items and 68 Smart Assemblies for:

- Foundation and Slabs
- Walls Floors
- Stairs
- Ceilings
- Roof Systems
- Exterior Elevations
- Thermal and Moisture Protection
- Finishes—Drywall/Metal Stud

## Sage Construction and Real Estate

15195 NW Greenbrier Parkway | Beaverton, OR 97006 | 800-628-6583 | [www.SageCRE.com](http://www.SageCRE.com)

